

## HOW TO USE DOS BOX TO PLAY TANKS IN 32 AND 64 BIT WINDOWS

1. Install DOS Box - just double click on the executable: DOSBox0.72-win32-installer.exe

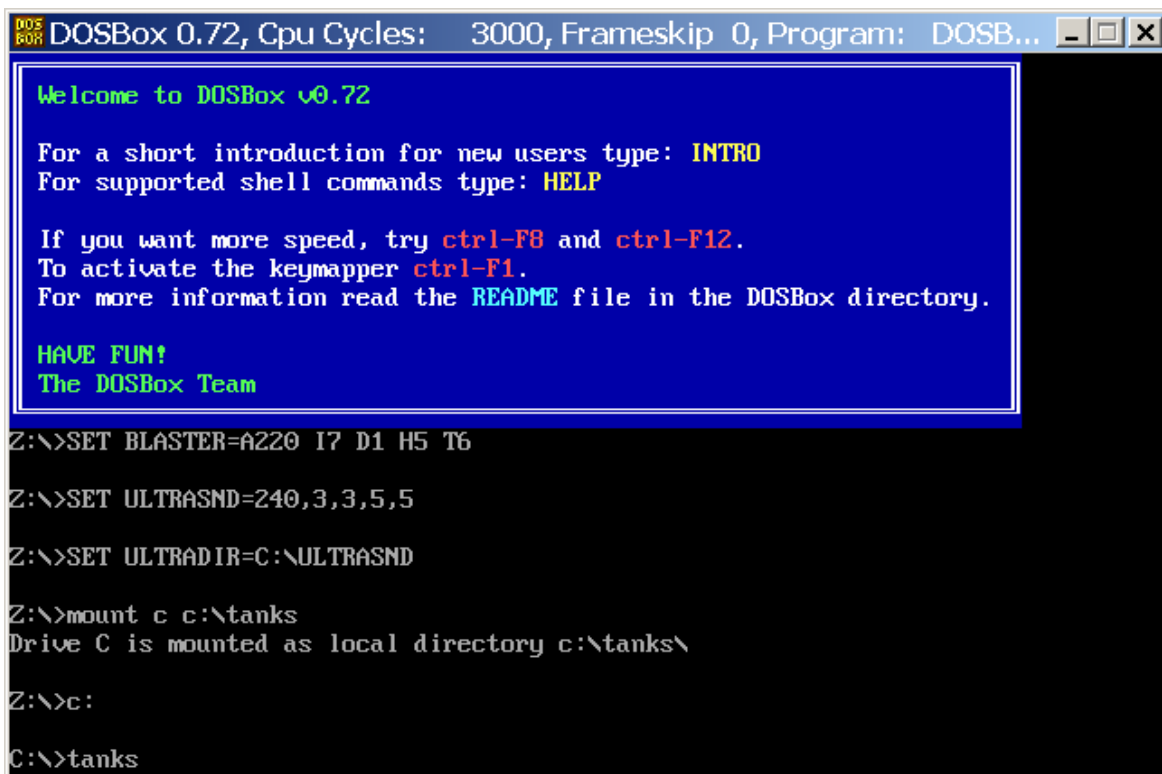
2. Then type the following commands:

```
mount c c:\tanks
```

```
c:
```

```
tanks
```

To clarify it further, see the screenshot below:



```
DOSBox 0.72, Cpu Cycles: 3000, Frameskip 0, Program: DOSB...
Welcome to DOSBox v0.72
For a short introduction for new users type: INTRO
For supported shell commands type: HELP
If you want more speed, try ctrl-F8 and ctrl-F12.
To activate the keymapper ctrl-F1.
For more information read the README file in the DOSBox directory.
HAVE FUN!
The DOSBox Team
Z:\>SET BLASTER=A220 I7 D1 H5 T6
Z:\>SET ULTRASND=240,3,3,5,5
Z:\>SET ULTRADIR=C:\ULTRASND
Z:\>mount c c:\tanks
Drive C is mounted as local directory c:\tanks\
Z:\>c:
C:\>tanks
```

To play TANKS with sound, just run SINSTALL.EXE following the same SOP described above. Again, see the screenshots below for a step by step sound configuration. See next screenshot.

```
DOS 608 DOSBox 0.72, Cpu Cycles: 3000, Frameskip 0, Program: DOSB...
Welcome to DOSBox v0.72

For a short introduction for new users type: INTRO
For supported shell commands type: HELP

If you want more speed, try ctrl-F8 and ctrl-F12.
To activate the keymapper ctrl-F1.
For more information read the README file in the DOSBox directory.

HAVE FUN!
The DOSBox Team

Z:\>SET BLASTER=A220 I7 D1 H5 T6

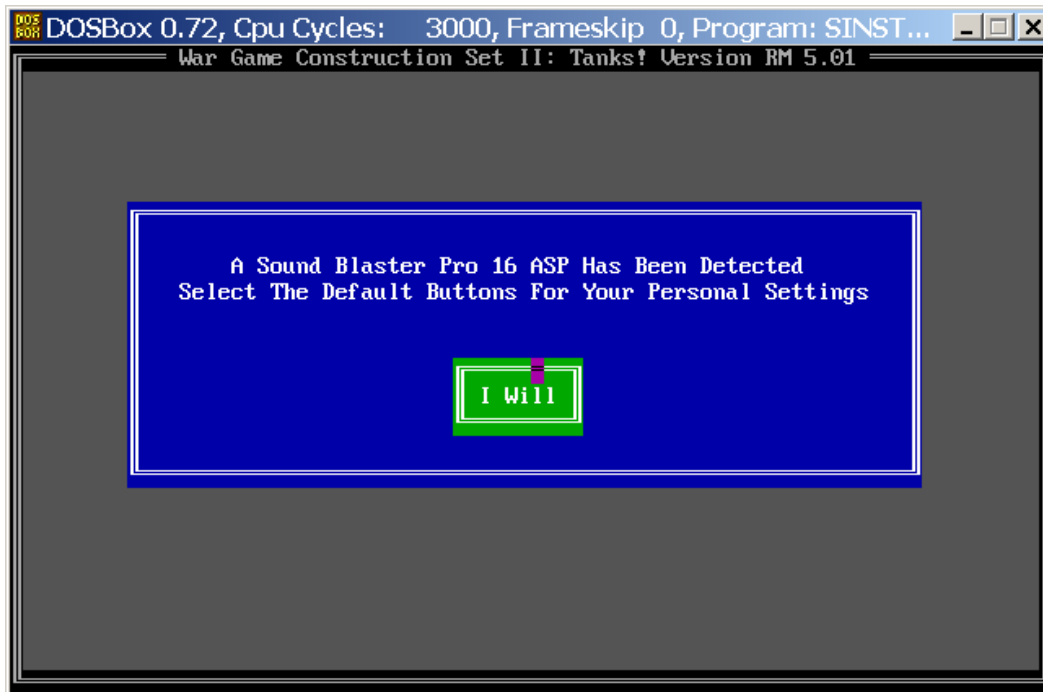
Z:\>SET ULTRASND=240,3,3,5,5

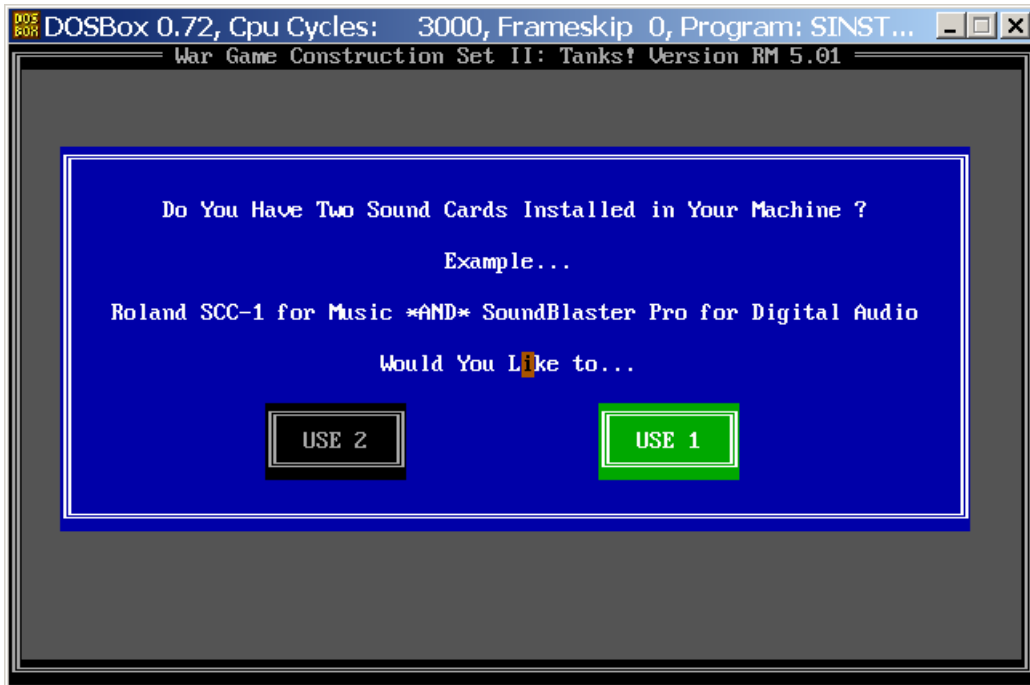
Z:\>SET ULTRADIR=C:\ULTRASND

Z:\>mount c c:\tanks
Drive C is mounted as local directory c:\tanks\

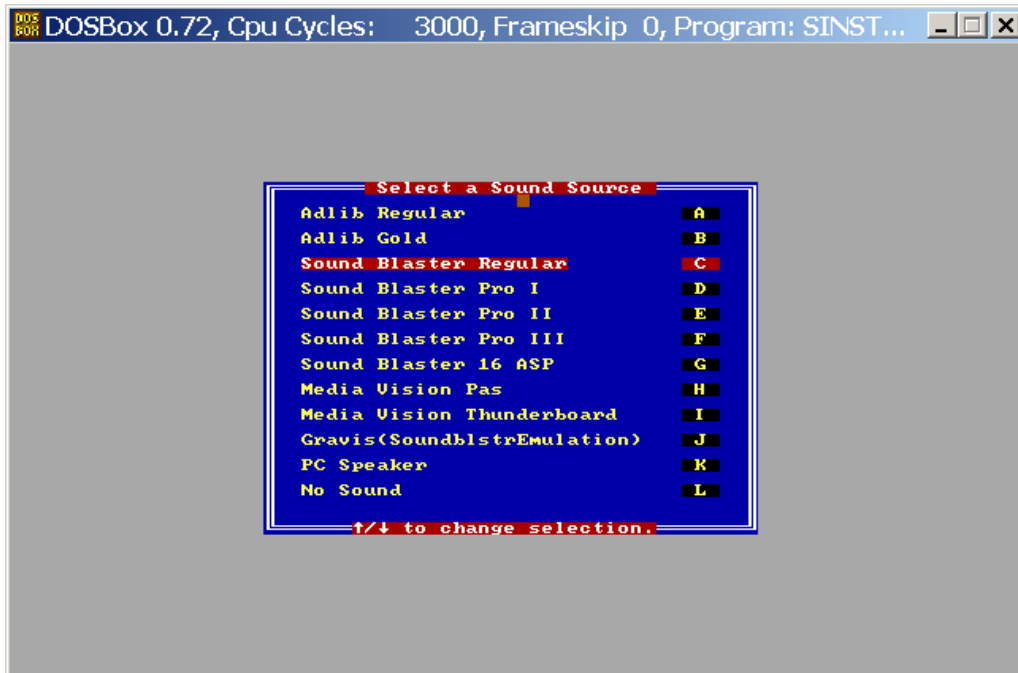
Z:\>c:

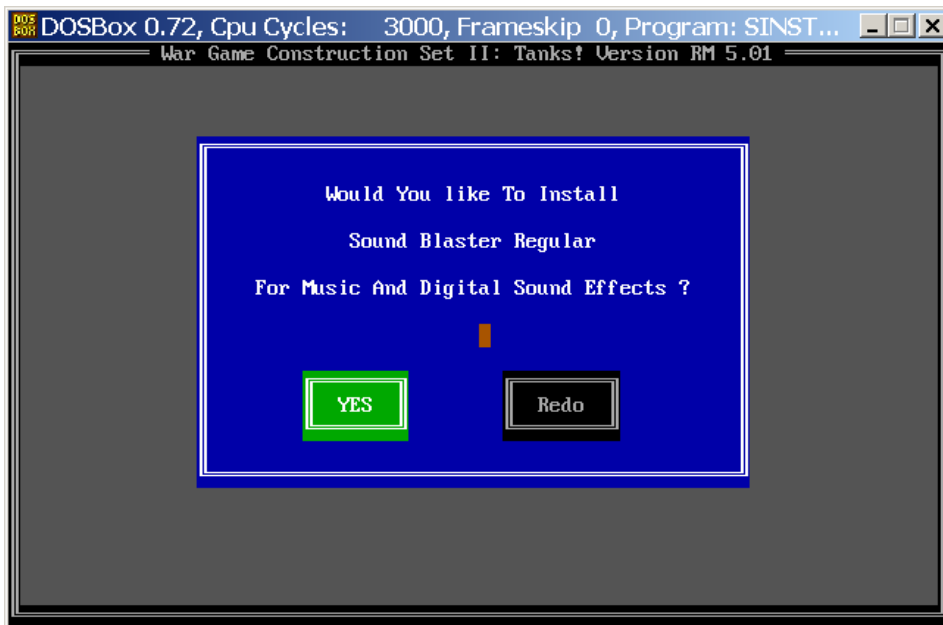
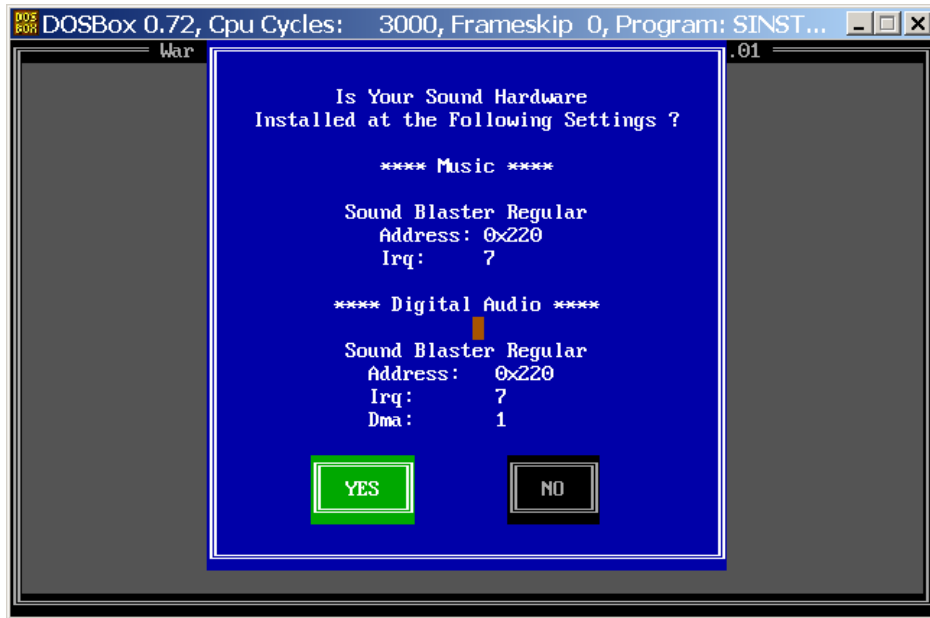
C:\>sininstall
```

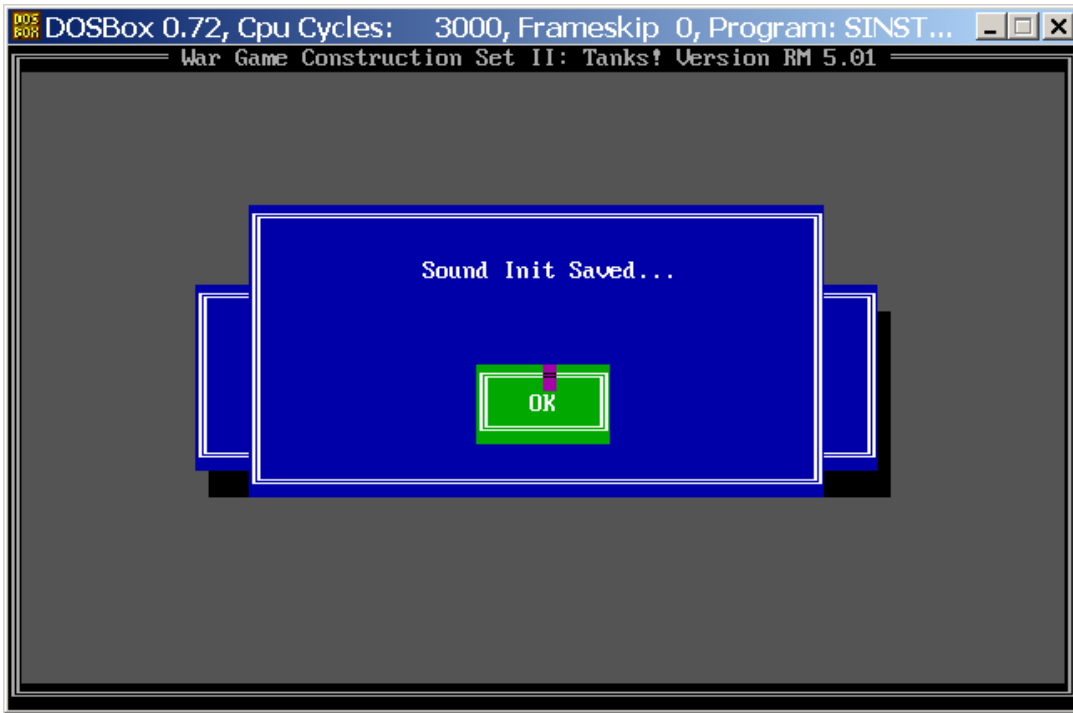




Remember to choose **SOUND BLASTER REGULAR!!!**







YOU'RE DONE!

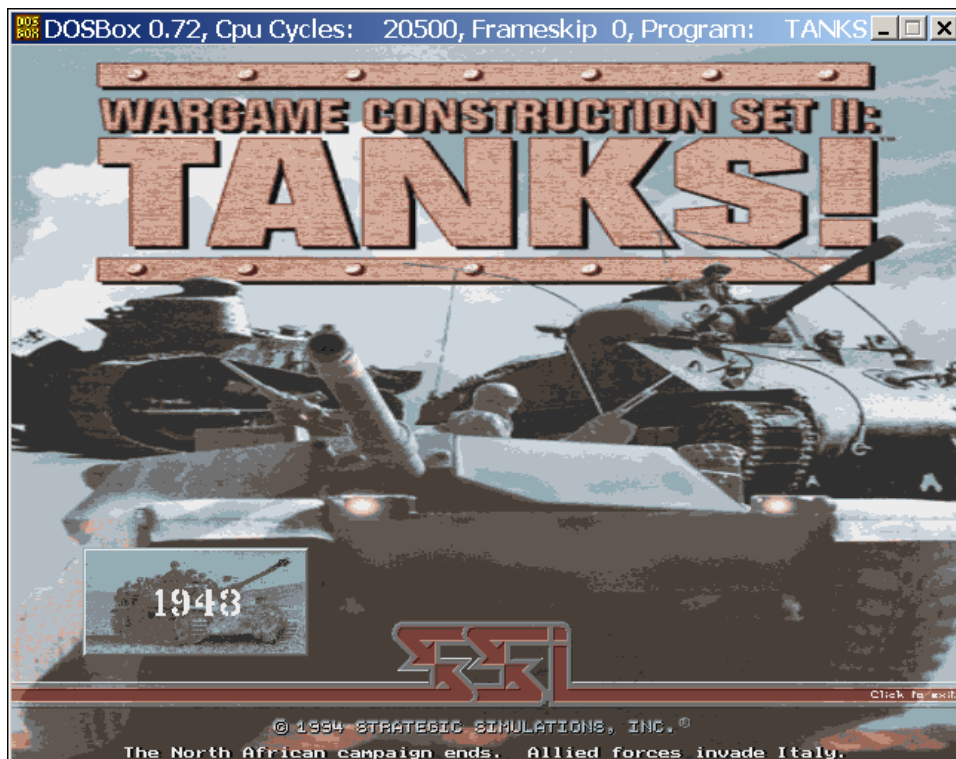
**MORE NEXT PAGE!**

## Now, just the final speed adjustment

DOSBox emulates a 486 computer running the good old MS-DOS. However, to play tanks with sound and everything, it's necessary to speed up the emulation a little. This is easily accomplished by typing **Ctrl+F12** repeatedly, until a speed around 20500 CPU Cycles are showing on the upper window.

**Please note that the 20500 CPU Cycles is only a guideline!** This value will vary according to the Operating System you use, and your computer's hardware configuration. The bottom line here is that you'll have to find it out by trial and error. But it's easy to do and pays off wonderfully in game play.

To clarify this, see the screenshot below:



## Playing in full-screen:

To play in full screen mode just type: **Alt+Enter...**

You're done. Have Fun! 😊

Fabio Prado

07.18.2008